

# LAKE, HIRST, MONASTERY AND KINKEAD UTILITY AND STREET IMPROVEMENTS PROJECT

Public Meeting  
4/24/24



## PROJECT TEAM



Michael Harmon, PE,  
Municipal Engineer

Loren Gehring, PE,  
Project Manager



ENGINEERS, INC.

Tyler Bradshaw, PE,  
Design Engineer

# MEETING GOALS & AGENDA

1

Present  
Current Design

2

Discuss  
Construction  
Impacts

3

Summary of public  
outreach completed  
and comments to  
date

4

Questions  
&  
Answers

5

Receive Public  
Comment

# PROJECT LIMITS

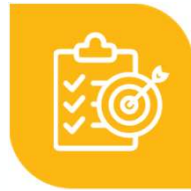


ANTICIPATE CONSTRUCTION  
TO LAST UP TO 2 SEASONS  
FALL 2025 TO FALL 2026

---

LAKE STREET WILL LIKELY  
OCCUR THE FIRST SEASON

# PROJECT PURPOSE & NEEDS



Part of CBS long range infrastructure plans



Replace aging utilities to reduce CBS maintenance burden and risk to residents



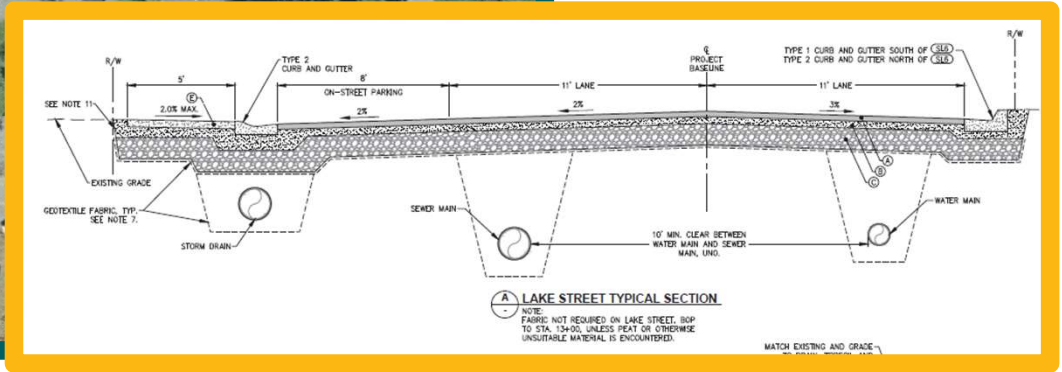
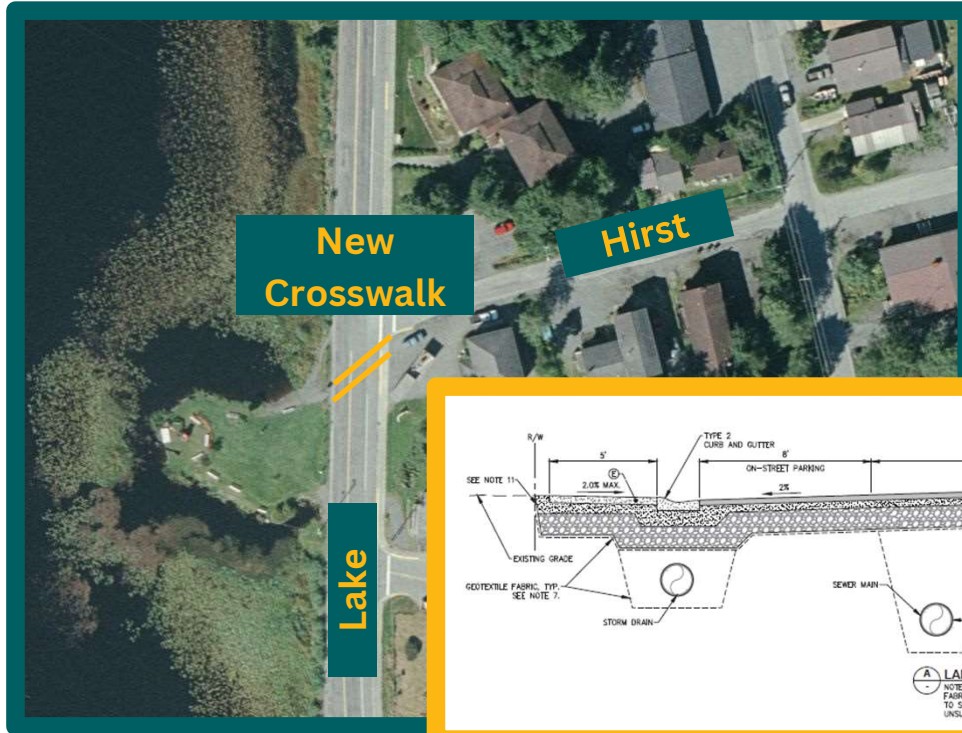
Replace pavement and improve pedestrian and bicycle facilities



Replace undersized culverts and at Wrinklneck Creek to current standards to mitigate flooding and improve fish habitat

# MAJOR PROJECT COMPONENTS

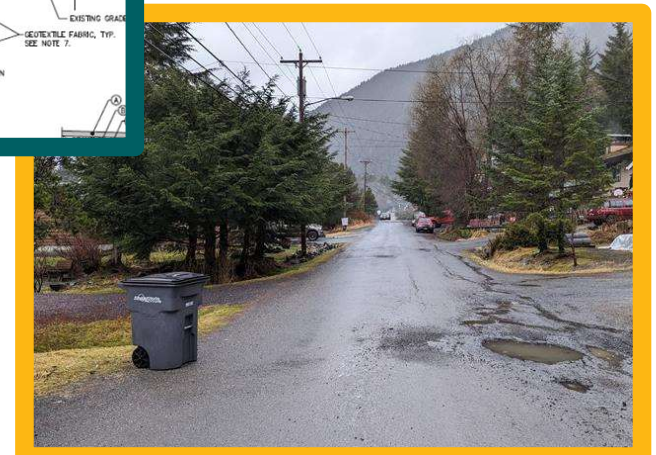
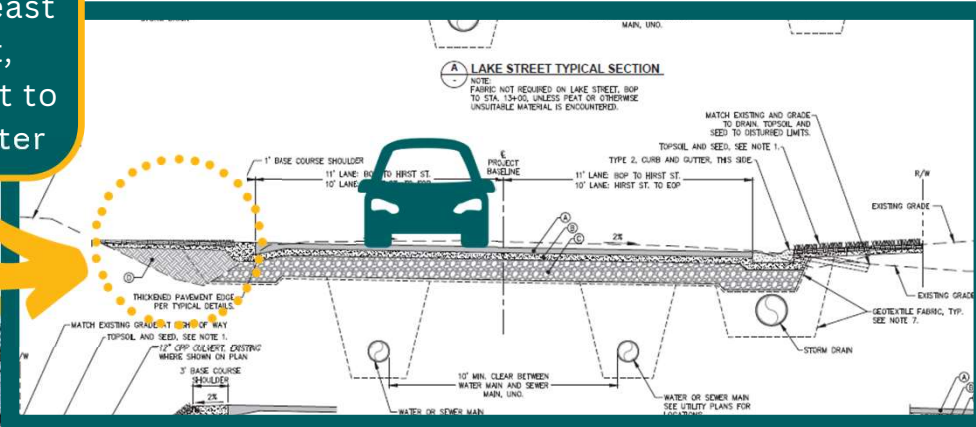
Lake Street – Generally replace in kind,  
streets, sidewalks and utilities



# MAJOR PROJECT COMPONENTS

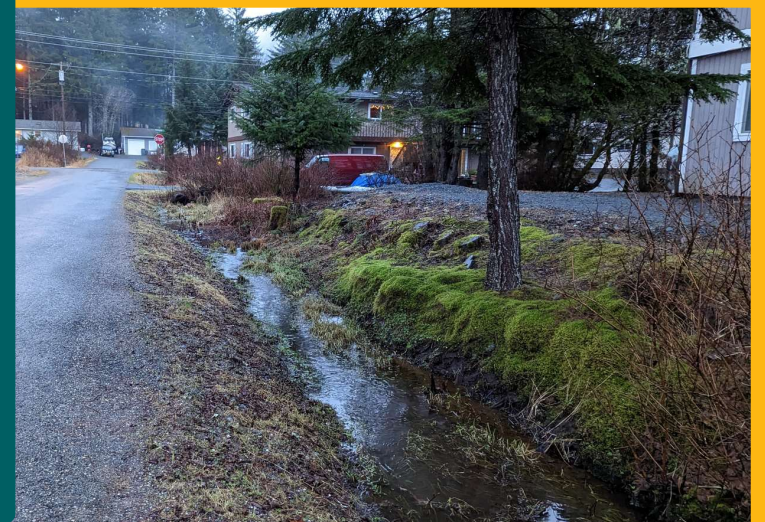
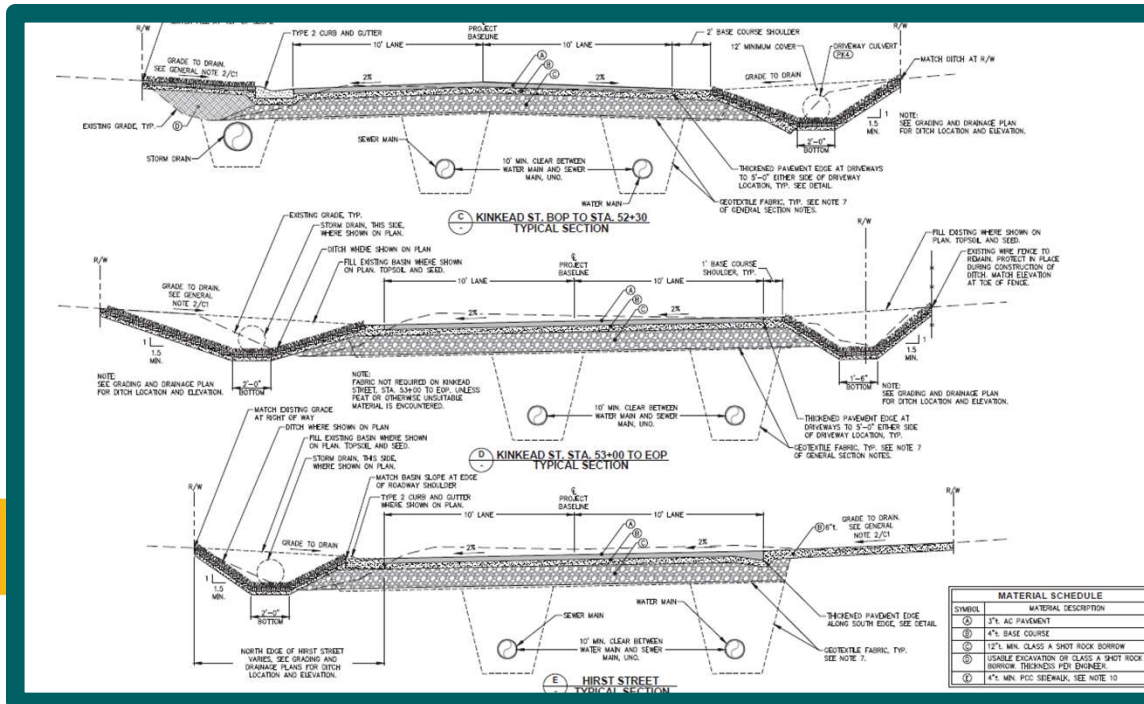
Monastery – Widen paved width, replace utilities and install storm drain system.

Driveway & ditches removed from east side of street, drainage to west to new curb & gutter



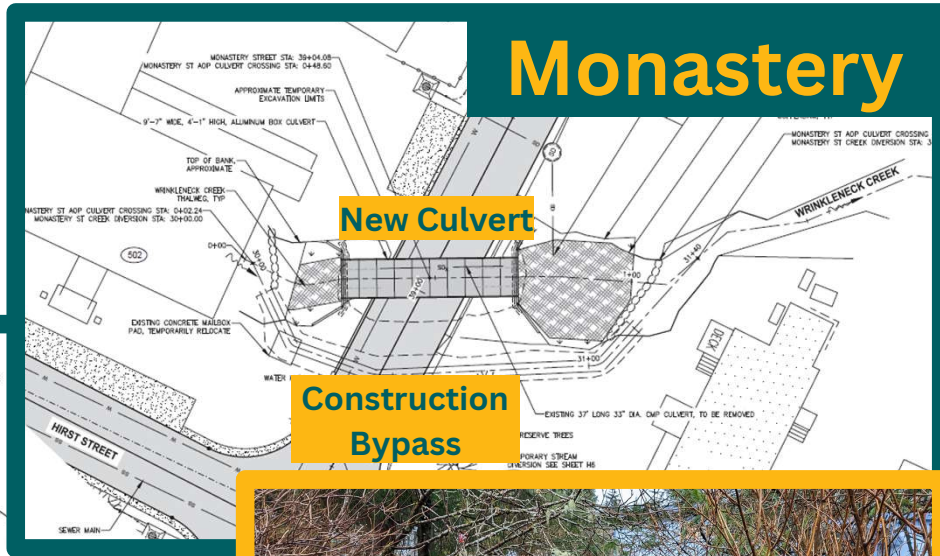
# MAJOR PROJECT COMPONENTS

Hirst and Kinkead – Widen paved width, replace utilities, & improve drainage.



# MAJOR PROJECT COMPONENTS

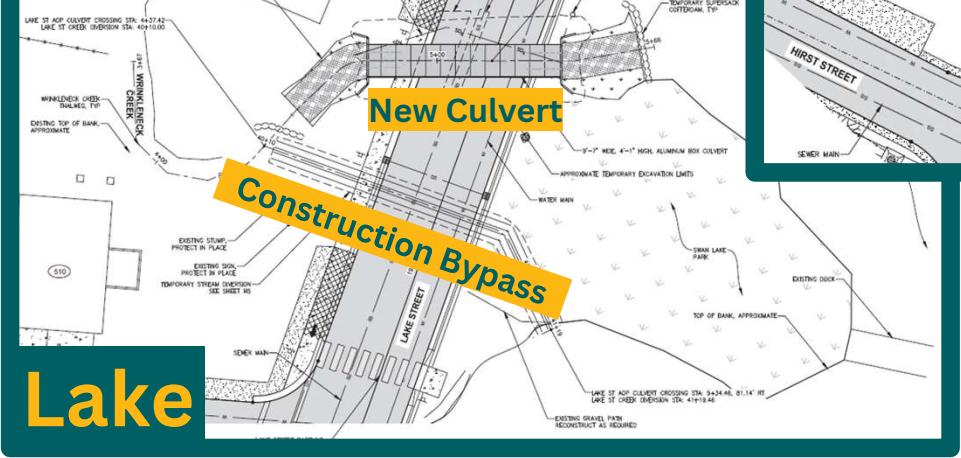
Wrinkleneck creek – Replace undersized culverts



Monastery

New Culvert

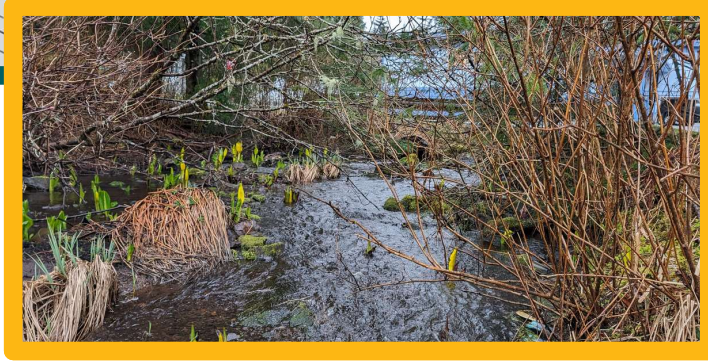
Construction Bypass



New Culvert

Construction Bypass

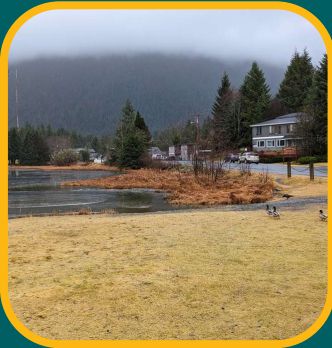
Lake





# ADDITIONAL PROJECT DETAILS

Stormwater treated  
ahead of outfalls to  
Swan Lake and  
Wrinkleneck Creek



Additional room for  
bikes and pedestrians  
on minor streets



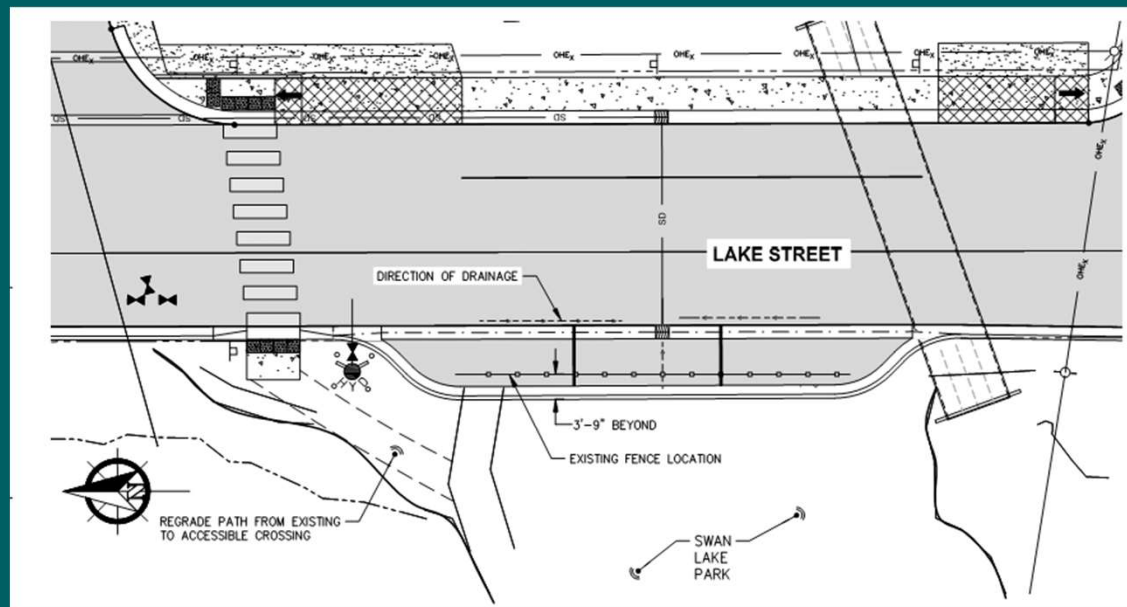
Fire Hydrant  
replacement and  
relocations



# ADDITIONAL PROJECT FEATURES

Additional parking adjacent to Swan Lake Park:

- Parks and Rec Meeting scheduled for May 14, 2024 at Noon HCH
- Public comment also welcome for this



# ADDITIONAL PROJECT FEATURES

Striping and signing to enhance shared streets for peds and bikes

- Traffic calming features:
  - Permanent traffic speed radar signs
  - Narrowed Lanes
- Shared use signage
- Designated shoulder

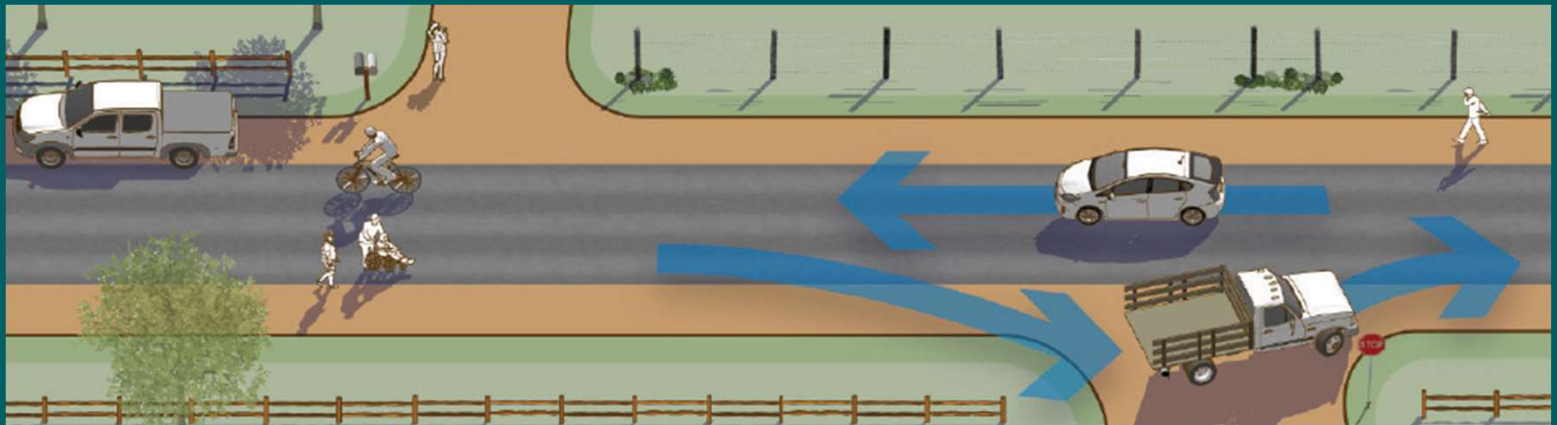


Public comments and ideas are welcome!

# ADDITIONAL PROJECT FEATURES

Striping and signing to enhance shared streets for peds and bikes (Cont.)

- Mixed Traffic Yield Roadway



# POTENTIAL CONSTRUCTION IMPACTS

## Most properties will have minimal physical impacts

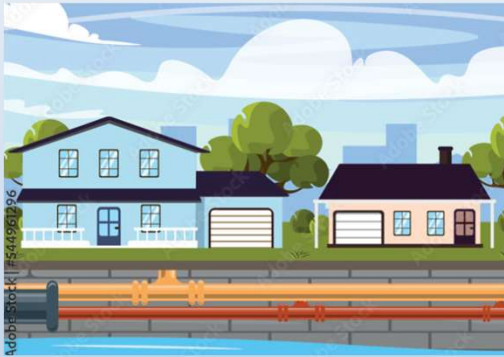
- Seeking limited construction easements from residents for project borders

## Some permanent easements required

## Construction impacts typical of street projects

- Some limited utility interruptions
- Some limited access interruptions
- Single lanes and/or detours and flagging anticipated
- Will keep residents informed as a contractor is selected and project progresses.
- Will work with Contractor to minimize interruptions and impacts to residents

# TRAFFIC MAINTENANCE DURING CONSTRUCTION



- **Notify all affected residents prior to:**
  - Traffic impacts**
  - Scheduled utility interruptions.**
  - Driveway reconstructions and paving**
- **Protect all private property and planted features unless shown on plans for removal.**
- **Maintain pedestrian routes and access to properties.**

# CONSTRUCTION COST ESTIMATE

Lake - Hirst - Monastery - Kinhead  
Project No. 60843

## Project Budget Estimate (04/2024)

Project Expense Estimates		
Construction	\$ 6,064,700	77%
Constuction Admin	\$ 500,000	6%
Design and Permitting	\$ 640,000	8%
Contingency	\$ 720,470	10%
<b>Total</b>	<b>\$ 7,925,170</b>	
Available Funding		
CBS General Funds	\$ 3,962,585	50%
CBS Revolving Fund	\$ 180,000	2%
ADEC Loans	\$ 3,782,585	48%
<b>Total</b>	<b>\$ 7,925,170.00</b>	

# PUBLIC OUTREACH TO DATE

- **October 2022:** Informational flyer was pinned to each residence and business.
- **February 2024:** Informational Mailer with temporary and permanent easements and project timeline
- **April 2024:** Public Meeting for project updates and to take public comment.

- **Fall 2024 (anticipated):** Second public meeting (with Contractor) outlining construction phasing and coordination with impacted residents.



# UPCOMING

- **Complete design and permitting**
  - Spring/Summer 2024
- **Bid and contractor on board**
  - Summer/Fall 2024
- **Procurement and construction planning**
  - Fall/Winter 2024/2025
- **Construction Phase I –**
  - Winter 2024 – Fall 2025
- **Construction Phase II**
  - Following Phase I – Fall 2026

# QUESTIONS? WE WANT YOUR INPUT!

Thank you for attending.  
For more information please  
visit:

[https://www.cityofsitka.com/  
departments/PublicWorks/  
LakeHirstMonasteryKinhead  
Project](https://www.cityofsitka.com/departments/PublicWorks/LakeHirstMonasteryKinheadProject)

